

# AMERICAN ACCESS SYSTEMS

## ADVANTAGE DK



### INSTALLATION AND PROGRAMMING INSTRUCTIONS

**MODEL**  
**ADV-1000(i)**  
Revision D

**Please Read Before Using This Equipment**

TECHNICAL SUPPORT: 303-799-9757 Monday thru Friday 8:30 a.m. - 5:00 p.m. MST



## 2 Year Warranty

**What item(s) this warranty applies to:**

American Access Systems "ADVANTAGE DK" access controls.

**What is covered:**

Any defect in materials or workmanship.

**For how long:**

Two years from date of purchase.

**What we will do:**

If your AAS product is defective and returned within 2 years of the date of purchase, we will repair it or, at our option, replace it at no charge to you. If we repair your AAS product, we may use new or reconditioned parts. If we choose to replace your AAS product, we may replace it with a new or reconditioned one of the same or similar design. The repair or replacement will be warranted for (a) 90 days or (b) the remainder of the original two year warranty period, whichever is longer.

**Limitations:**

Implied warranties, including those of fitness for a particular purpose and merchant ability (an unwritten warranty that the product is fit for ordinary use), are limited to two years from date of purchase. We will not pay for loss of time, inconvenience, loss of use of your AAS product, service calls, or property damage caused by your AAS product or its failure to work, or any other incidental or consequential damages. Some states do not allow limitations on how long an implied warranty lasts or the exclusion or limitation of incidental or consequential damages, so the above exclusions or limitations may not apply to you.

**What we ask you to do:**

To get warranty service for your AAS product, you must provide proof of the date of purchase. Contact the original dealer or installer of the product and return your AAS product along with the receipt to them. If you have problems locating the dealer or installer contact American Access Systems at (303) 799-9757 and we will direct you to an authorized dealer or distributor of American Access Systems products. If you ship your AAS product, you must prepay all shipping costs. We suggest that you retain your original packing material in the event you need to ship your AAS product. On return, include your name, address, phone number, proof of date of purchase, and a brief description of the operating problem.

**What this warranty does not cover:**

This warranty does not cover defects resulting from accidents, damage while in transit, alterations, unauthorized repair, failure to follow instructions, misuse, fire, flood, and acts of God. Nor do we warrant your AAS product to be compatible with any particular external device or peripheral. If your warranty has expired on your AAS product or if your product is NOT covered contact your dealer or installer for advice on whether we will repair your AAS product and other repair information, including estimated repair costs and other charges. We, at our option, may replace rather than repair your AAS product with a new or similar design if the damage to the unit is severe or extensive.

This warranty is the only one we give on this product, and it sets forth all our responsibilities regarding your AAS product. There are no other express warranties.

**State Law rights:**

This warranty gives you specific legal rights, and you may also have other rights which vary from state to state.

**AMERICAN ACCESS SYSTEMS, INC.  
7079 SOUTH JORDAN ROAD / UNIT 6  
CENTENNIAL, CO. 80112  
PH: (303) 799-9757**

SERIAL# \_\_\_\_\_

# **PARTS CHECKLIST**

**Enclosed with this box you should have the following items.**

<b>Qty</b>	<b>Description</b>
1	Control Station
4	1/4 by 1/2 carriage bolts
4	1/4-20 hex nuts

**If any of the above items are missing from this box, contact American Access Systems**

## **TOOLS YOU WILL NEED**

Wire nuts or appropriate connectors

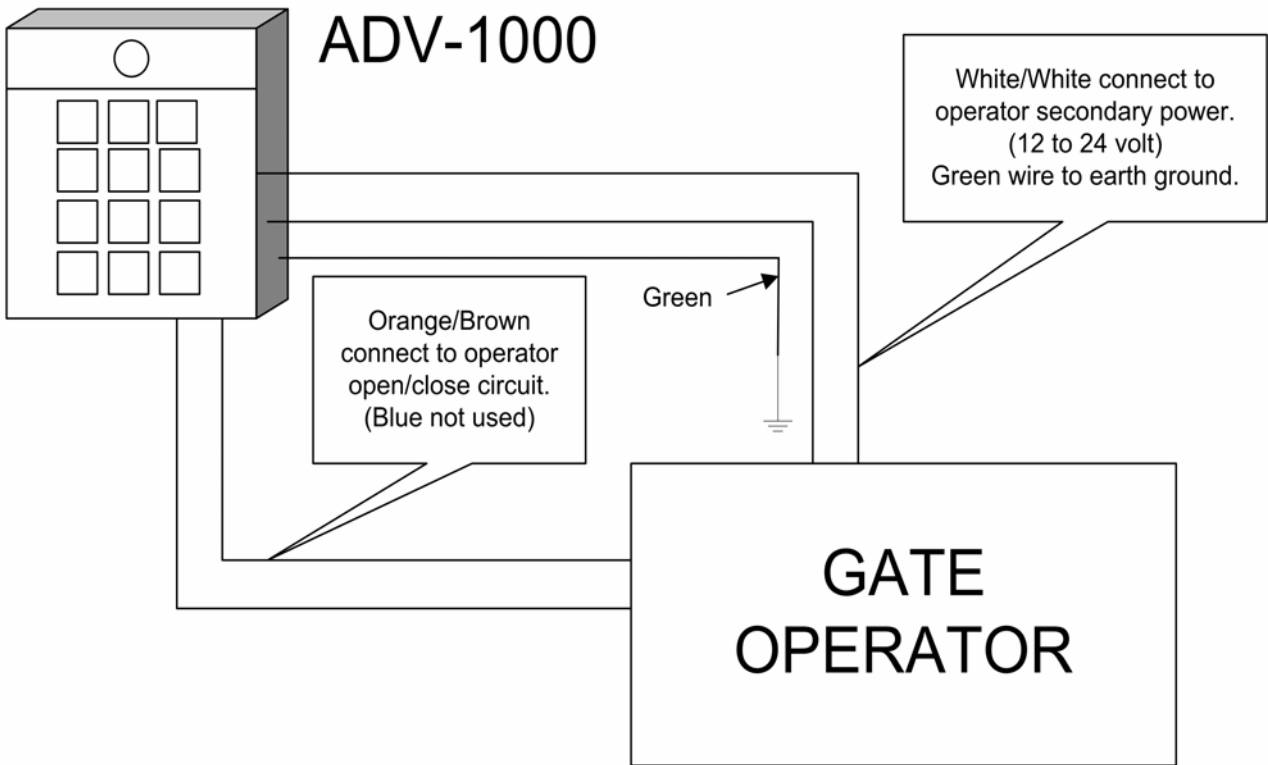
Wire strippers

Wire cutters

3/8" drive ratchet with 6" extension and 7/16" socket

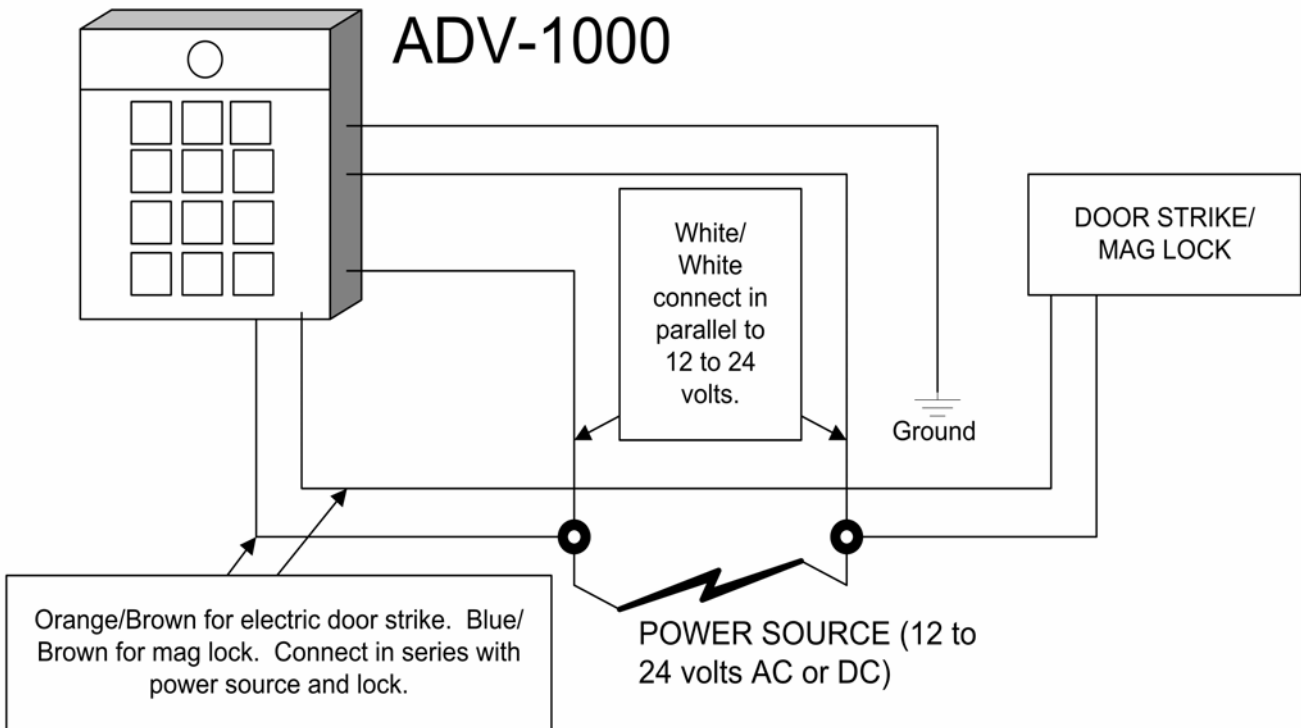
Digital or Analog multi-meter

# OPERATOR WIRING DIAGRAM



---

# DOOR STRIKE/MAG LOCK WIRING DIAGRAM



## **BEFORE PROCEEDING**

To take full advantage of the 24 month limited warranty, you must register with American Access Systems, Inc. Please read the enclosed warranty statement, (pg. 1), fill out the warranty registration card provided, and send it to:

**American Access Systems, Inc.  
Warranty Registration  
7079 South Jordan Road / Unit 6  
Centennial, Co. 80155**

## **INTRODUCTION**

Your new AAS unit is a high quality, programmable, commercial digital key control station which will control access to a passageway using 4 digit access codes. The Advantage DK incorporates state of the art electronics to provide a product which is highly sophisticated yet inexpensive. Your unit incorporates the following features.

- 1 programmable 4 digit Master Code.
- 1 programmable 4 digit Sleep Code
- 1 programmable 4 digit Latch Code
- Up to 500, (depending on the model), 4 digit access codes which may be assigned to 1 of 2 relays
- A programmable “three strikes-you’re out” feature which will disable the unit for approximately 1 1/2 minutes if 3 incorrect codes are entered within a 3 minute time period.
- 2 relays programmable from of 1/2 to 99 seconds incorporating both (N/O) and normally closed (N/C) contacts.
- An external event trigger programmable as a Remote Inactive, Arming, or Remote Open input.

## **STEP1 (Mounting the unit)**

Page 3 states the tools and instruments needed to install your unit as well as a parts check list. Make sure to have all the tools listed. Upon opening the box, check off the items enclosed with the unit. If any items are missing from your unit, contact American Access Systems immediately.

### **Mounting the unit to your own pedestal**

Your unit comes with a square mounting flange found in the bottom of the box along with four carriage bolts and four hex nuts. The square mounting flange may be welded to your pedestal and the flange bolt pattern will align with the unit. Place the unit up to the flange and insert the four carriage bolts from the backside. Secure the unit to the flange.

### **Mounting the unit to an AAS gooseneck pedestal (18-001) or double height gooseneck (18-003)**

Locate the four carriage bolts and four hex nuts found inside the unit box. Place the unit up to the pedestal flange and insert the four carriage bolts from the backside. Secure the unit to the pedestal. The extra square mounting flange may be discarded.

## **STEP2 (SYSTEM CONNECTIONS)**

Wiring diagrams for your unit are presented on page 3. Usually, you will be interfacing the unit to a gate operator. However, a wiring diagram for interface to an electric door strike or mag lock is also provided. Carefully study the diagram which best suits your particular installation. On the following page, (page 5), are shown the wire harness color codes. After studying, go on to the hookup steps.

## **HARNESSE COLOR CODES**

WHITE (AC Hot) (DC +)	11.5 - 29 volts AC or DC
WHITE(AC Neutral)(DC -)	11.5 - 29 volts AC or DC
GREEN	EARTH GROUND ONLY

### **RELAY A (PRIMARY) CONTROL COLOR CODES**

BROWN	RELAY (A) COMMON
ORANGE	RELAY (A) NORMALLY OPEN (N/O)
BLUE	RELAY (A) NORMALLY CLOSED (N/C)

### **RELAY B (SECONDARY) CONTROL COLOR CODES**

(Used only if controlling a second device)

GRAY	RELAY (B) COMMON
VIOLET	RELAY (B) NORMALLY OPEN (N/O)
YELLOW	RELAY (B) NORMALLY CLOSED (N/C)

### **Hookup Steps**

(A). Your unit operates between 11.5 volts minimum and 29 volts AC maximum. Measure your voltage to make sure it falls within these tolerances. Locate the two white wires on the main harness of the circuit board and, **WITH THE POWER OFF**, connect them to the power supply leads. Polarity need not be observed as the unit is rectified.

(B). Connect the primary device to be controlled to the units primary relay control leads. If you are connecting to a gate operator or electric door strike use the **BROWN** and **ORANGE** leads. If you are connecting to a mag-lock or any device that requires power in the locked state, use the **BROWN** and **BLUE** leads. (See page 3). If you are interfacing to a secondary device, connect the units secondary relay control leads to the device.

(C). Double check your connections. When you are sure you have the unit hooked up correctly, apply power to the unit. If this is the **FIRST TIME POWER UP** of the unit, the unit will perform self diagnostics. After each test has passed, the unit will sound a beep. The unit will perform a total of 4 tests. The unit will then flash the LED's several times while it is performing a memory setup. Once all the tests have passed and the unit is set up correctly, you will hear a good beep from the unit. If the unit does not perform as above, quickly shut off power to the unit and contact your distributor or American Access Systmes. **NOTE: THE UNIT WILL ONLY PERFORM THE SELF DIAGNOSTICS ON THE FIRST TIME POWER UP. FROM THERE ON OUT THE UNIT WILL SOUND A GOOD BEEP EACH TIME POWER IS APPLIED.**

## ACCESS & FUNCTION CODES

Depending on which model you have, your unit may be programmed with 1000 multiple (4 digit) access codes. There are two different types of codes, access codes & function codes. Although the number of access codes will vary with each model, the number of function codes is always 3.

### FUNCTION CODES

#### "MASTER CODE"

This code is a programmable four digit code used for gaining access to the program mode. The factory default master code is 1 2 5 1.

#### "LATCH CODE"

This code is a programmable four digit code used to toggle relay A. This code will be used to hold open a gate or door.

#### "SLEEP CODE"

This code is a programmable four digit code which when entered, will disable all codes. When the "SLEEP CODE" is entered again the unit will be enabled. An override code is provided.

### GOODBEEPS & ERRORBEEPS

Your unit will beep each time a key is pressed. The "\*" key serves as the clear key and a double beep will be heard when this key is pressed. A "GOODBEEP" is represented by an oscillating high tone. An "ERROR BEEP" is represented by a single low tone.

### THE RED & YELLOW LED's

Two different colored LED's are in the face of the unit. The red LED will light during the duration of the relay(s) activation period. The yellow LED will light while the unit is in the program mode. During memory erasure or setup the LED's will flash.

### RESETTING THE UNIT

Your unit provides 2 different types of resets, a Master Reset, and a Unit Reset.

A Master Reset should be utilized in the event that you lose or forget your master code or if the unit is in the Latch or Sleep mode and the Latch or Sleep code is lost or forgotten. When a Master Reset is performed, the master code will be set back to 1 2 5 1.

A Unit Reset is provided should it ever become desirous to reset the unit back to the initial factory state. After a Unit Reset has been performed the unit will **DELETE ALL ACCESS & FUNCTION CODES** and the master code will be set back to 1 2 5 1.

### MASTER RESET

Follow these steps precisely. If you make an error, the unit will ERROR and you will have to start over.

- ⇒ Disconnect power from the unit by pulling the wire harness away from the board.
- ⇒ Reconnect power to the board while holding down the RESET button (See location diagram,

## **UNIT RESET**

(!!!! WARNING: ALL CODES WILL BE DELETED FROM MEMORY !!!!)

\* (Please See pg. 6 for further information)

Follow these steps precisely. If you make an error, the unit will ERROR and you will have to start over.

- ⇒ Disconnect power from the unit by pulling the wire harness away from the board.
- ⇒ Reconnect power to the board while holding down the RESET button (See location diagram, pg. 11 ).
- ⇒ Release Reset button & enter # \* # (The unit will respond with a GOOD BEEP)
- ⇒ Enter the MASTER CODE from the keypad. (The unit will flash the LED's several times and then go into an endless cycle of beeps)
- ⇒ Disconnect & Reconnect power to the unit. (The unit will go through the "First Time Power Up" sequence (See page 5).

### **The idle mode**

The idle mode is the normal mode of operation. When in this mode the unit sits and waits for data from the keypad. When in this mode you will have approximately 4 seconds between keypresses. If this time is exceeded, you will receive an ERROR.

### **The program mode**

The program mode is the mode of operation in which you will enter, delete, or change your codes or set specific features of the unit. The program mode is accessed by entering the "MASTER CODE" from the keypad. You will receive a GOOD BEEP and the yellow LED will come on indicating that you are in the program mode. In this mode you will have approximately 30 seconds between key presses. If this time is exceeded, you will receive an ERROR and be exited from the program mode. **NOTE: 1251 WILL NOT OPEN THE GATE.**

### **The \* and # keys**

The \* and # keys serve specific functions while in the idle or program mode. The \* key is always the clear key and a double beep will be heard when depressed. You should use this key if you make an entry error. The # key also serves as the clear key in the idle mode. In the program mode however, it serves as the exit key and will at any time when depressed, exit you from the program mode.

## **PROGRAMMING**

A person desiring access to the program mode will enter the present MASTER CODE. If the master code is valid the yellow LED will come on and the individual will be prompted with a GOOD BEEP to enter a number corresponding to a SUB-MODE, (MASTER CODE) +

SUB-MODE	DESCRIPTION
1	Program Access Codes (Relay A)
2	Delete Codes
3	Change Master Code
4	Set Sleep Code
5	Set Latch Code
6	Set Relay Output Times
7	Program Access Codes (Relay B)
8	Enable / Disable "3 Strikes-You're Out"
9	Program Event Input
0	Erase Memory

### ◆ Sub-Mode 1 (Program Relay A Access Codes)

To program new Relay A access codes enter the following;

(MASTER CODE) *then* 1 *then* (NEW CODE) *then* (# to exit)

Should you make a code entry error, simply press the \* key and enter the correct code. You may select any 4 digit code you wish. If you receive an ERROR after entry, you must select another code as it is already in use. The unit will respond with a GOOD BEEP with the acceptance of each new Relay A code. You may continue entering Relay A codes until you finish (Press #), or the memory becomes full. You will automatically be exited from the program mode if the memory reaches capacity. When memory is full you will not be able to enter this Sub-Mode and will receive an ERROR if entry is attempted.

### ◆ Sub-Mode 2 (Delete Codes)

To delete codes enter the following;

(MASTER CODE) *then* 2 *then* (CODE TO BE DELETED) *then* (# to exit)

Should you make an entry error, simply press the \* key and enter the correct code. You may delete any access or function code that you wish with the exception of the MASTER CODE. If the code you wish to delete is not found in memory, the unit will respond with an ERROR and wait for another code to be entered. A GOOD BEEP will be sounded once the code has been found and deleted. You may continue deleting codes until you finish (Press #).

### ◆ Sub-Mode 3 (Change Master Code)

To change your master code enter the following;

(present MASTER CODE) *then* 3 *then* (new MASTER CODE)

### ◆ **Sub-Mode 4 (Set Sleep Code)**

EXPLANATION: The sleep code is used to disable all Relay A and function codes from the keypad. This feature is most commonly used in applications where no entry is desired after hours. Relay B codes will still be valid from the keypad. By connecting both relays in parallel, managers may be assigned RelayB codes and still gain access. While in the SLEEP MODE, the yellow and red LED's will flash approximately once every 3 seconds. To initialize the system back to normal, simply re-enter the sleep code. Should you lose or forget your sleep code and the unit is in the sleep mode see the Unit Reset instructions on pages 6 & 7.

To program or change your sleep code enter the following;

(MASTER CODE) then 4 then (SLEEP CODE)

Should you make a code entry error, simply press the \* key and enter the correct code. You may select any 4 digit sleep code you wish. If you receive an ERROR, you must select another code as it is already in use. The unit will respond with a GOOD BEEP with the acceptance of the new Sleep Code and you will be exited from the program mode.

### ◆ **Sub-Mode 5 (Set Latch Code)**

EXPLANATION: The Latch Code toggles the state of the main relay (A) of the circuit board. The red LED will light if the relay is in the latched position. The latch code is useful in applications where the gate is desired to hold open. If the operator's close circuit is controlled by loops, timers, etc., they will be overridden by the latched state of the relay and the gate will hold open. An "OPEN-OVERRIDE" circuit must exist in the operator in order to utilize this function. If your gate cycles when this code is entered, your operator is not set up to utilize this function. Your local dealer or distributor should be able to assist you if you have any specific questions.

To program or change your latch code enter the following;

(MASTER CODE) then 5 then (LATCH CODE)

Should you make a code entry error, simply press the \* key and enter the correct code. You may select any 4 digit latch code you wish. If you receive an ERROR, you must select another code as it is already in use. The unit will respond with a GOOD BEEP with the acceptance of the new Latch Code and you will be exited from the program mode. When the latch code is entered the RED Led will light and the gate will hold open. When the latch code is entered again the RED Led will go off and the gate will close. **NOTE: On gates with a timer to close the "TIMED DURATION" starts when the latch code is released.**

### ◆ **Sub-Mode 6 (Set Relay Output Times)**

To set or change a relay output time enter the following;

(MASTER CODE) then 6 then (RELAY #) then (RELAY OUTPUT TIME) in seconds

### ◆ **Sub-Mode 7 (Program Relay B Access Codes)**

To program new Relay B access codes enter the following;

(MASTER CODE) then 7 then (NEW CODE) then (NEXT NEW CODE) etc..... (# to exit)

Should you make a code entry error, simply press the \* key and enter the correct code. You may select any 4 digit code you wish. If you receive an ERROR after entry, you must select another code as it is already in use. The unit will respond with a GOOD BEEP with the acceptance of each new Relay B code. You may continue entering Relay B codes until you finish (Press #), or the memory becomes full. You will automatically be exited from the program mode if the memory reaches capacity. When memory is full you will not be able to enter this Sub-Mode and will receive an ERROR if entry is attempted.

### ◆ **Sub-Mode 8 (Enable/Disable 3 Strikes-You're Out)**

EXPLANATION: This feature is desirable to keep unwanted persons from successively entering codes until they "hit" a programmed access code. By selecting this function you enable a 1 1/2 minute lock out period if 3 incorrect codes are entered successively within a 3 minute period. When this occurs, the LED's will flash and a high pitched alarm will be generated from the unit for 30 seconds. The unit will then shutdown for 1 minute.

To toggle the 3 strikes-you're out feature enter the following;

(MASTER CODE) then 8 (*\*current state*) then (MASTER CODE)

*\*current state*

*single beep = 3 strikes enabled*

*double beep = 3 strikes disabled*

Should you make a code entry error, simply press the \* key and enter the correct code. After you have selected mode 8, the unit will respond with a single or double beep. A single beep indicates that the 3 strikes-you're out feature is presently enabled. A double beep indicates that the 3 strikes-you're out feature is presently disabled. The unit will then issue a GOOD BEEP and wait for the master code. If you wish to toggle the 3 strikes your out state, enter the master code. If you do not wish to toggle the state, enter # to exit.

### ◆ **Sub-Mode 9 (Program Event Input)**

EXPLANATION: The event input allows the user to tie in an external device to control specific functions of the unit. The event input can be programmed in 1 of 4 ways:

- REMOTE INACTIVE: Relay A codes may be made inactive by an external switch. When inactive all relay A codes will be disabled. The relay B, program, and function codes will still be accessible to the end user.

◇ To program the event input as Remote Inactive enter the following;

(MASTER CODE) then 9 (*\*current mode*) then 1

◇ To program the event input as an Arming Circuit enter the following;

(MASTER CODE) then 9 (*\*current mode*) then 2

◇ To program the event input as Remote Open enter the following;

(MASTER CODE) then 9 (*\*current mode*) then 3 then (*\*Relay to Activate*)

◇ To **DISABLE** the event input enter the following;

(MASTER CODE) then 9 (*\*current mode*) then 0

*\*Current Mode*

*Single beep = Remote Inactive Mode Enabled.*

*Double beep = Arming Circuit Mode Enabled.*

*Triple beep = Remote Open Mode Enabled.*

*GoodBeep Only = Event Input Disabled.*

*\*Relay to Activate*

*1 = Relay A.*

*2 = Relay B.*

After you have selected mode 9, the unit will respond with tones as described above. This gives the current mode the event input is programmed as (See *\*Current Mode* above). If you **do not** wish to toggle the state, enter # to exit. If you are programming the event input as a Remote Open input, you will be prompted for which relay to activate on an event. Enter the correct relay as stated above (*\*Relay to Activate*).

◆

## ◆ **Sub-Mode 0 (Erase all codes)**

To erase all access & function codes, (except the master code), enter the following;

(MASTER CODE) then 0 then (MASTER CODE)

Should you make a code entry error, simply press the \* key and enter the correct code. When the sequence is entered correctly, the LED's will flash several times and the unit will generate a GOOD BEEP when it has finished clearing the memory. If the above sequence is not validated by the unit you will receive an ERROR and immediately be exited from the program mode.

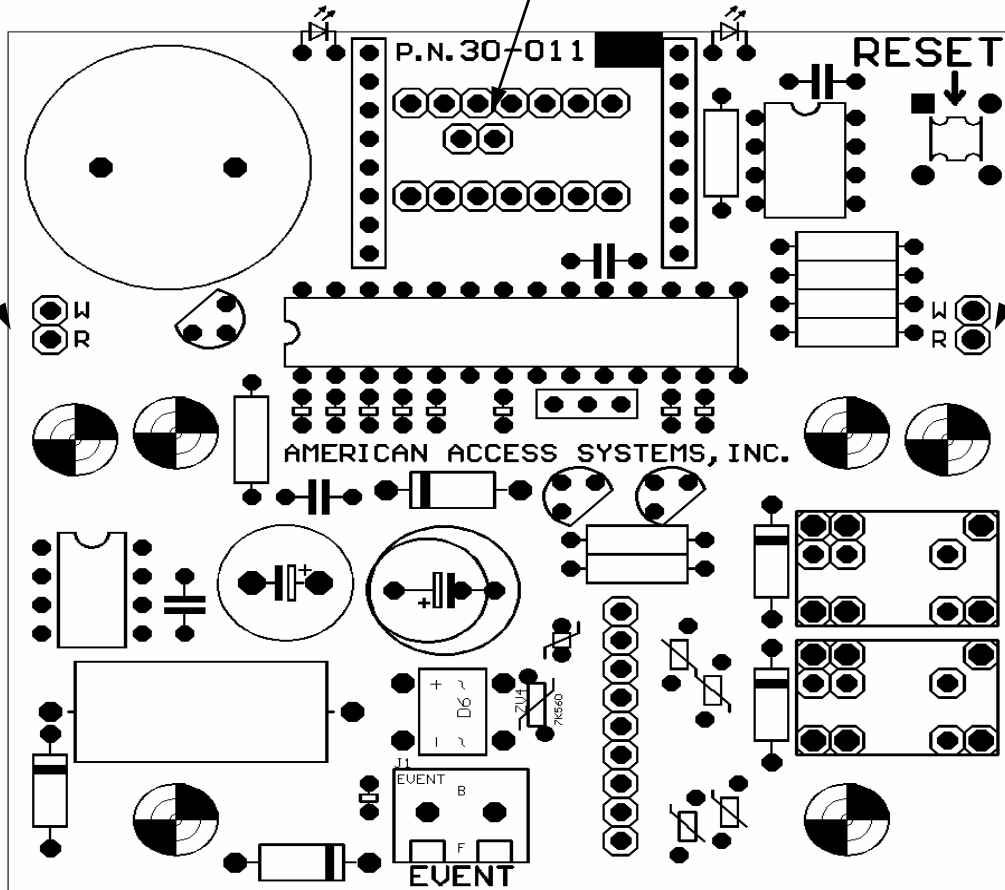
**AN IMPORTANT NOTE: It should not generally be necessary to erase all the codes from memory unless codes are forgotten and are occupying necessary memory. A good log and maintenance of access codes should prevent this from ever needing to be done.**

# BOARD LAYOUT

## 5 Volt Lamp Connection

Yellow LED

Red LED



Event Input

# Troubleshooting

Problem	Solution
When I enter 1251 on the keypad the gate will not open.	1251 is the Master Code or programming access code. It will not open the gate unless the unit is in sleep mode. Program a gate access code into the unit using Sub-Mode 1(listed in the programming instructions).
No response from keypad.	Verify power input across two white wires on main harness. Check yellow night light LED's to see if they are on. Check for burn marks on the circuit board from a lighting surge. Contact American Access Systems Inc.
After I enter the latch code to hold the gate open it closes or cycles open and shut.	An open override circuit must be enabled in the gate operator to prevent the timer circuit from overriding the keypad when it is in a latch mode. Contact gate operator manufacture.
When I enter a valid gate code the gate does not open.	Locate the two wires attached to the Brown and Orange wires on the main wire harness, then touch them together. If the gate does not open check wiring or the connection terminals on gate operator. If the gate opens contact American Access Systems.
I connected the two white power wires together to one power source wire and the other power source wire to the green wire but the keypad doesn't work.	The green wire is for EARTH GROUND only. Connect one white wire to one power source wire and the other white wire to the second power source wire.
When I press 1251 on the keypad nothing happens and I hear a endless set of error tones.	Contact American Access Systems Inc.
I want to reset my keypad but when I push the reset button nothing happens.	Consult instructions regarding MASTER and UNIT reset for proper reset sequence.

# Notes

**American Access Systems Inc.  
7079 South Jordan Road #6  
Centennial, Co. 80112**

**Sales: 1-800 541-5677**

**E-mail: [sales@americanaccess.com](mailto:sales@americanaccess.com)**

**Customer Service: 1-303-799-9757**

**E-mail: [customerservice@americanaccess.com](mailto:customerservice@americanaccess.com)**

**Tech-Support: 1-303-799-9757**

**E-mail: [techsupport@americanaccess.com](mailto:techsupport@americanaccess.com)**